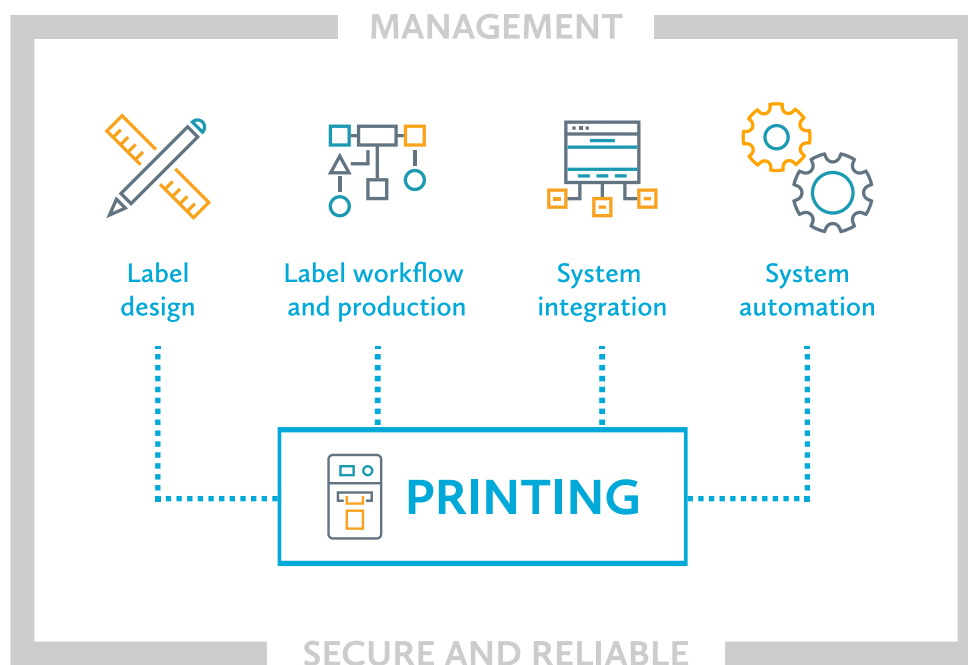


BarTender[®] 2021

BarTender[®] 2021 is the latest release of the labeling software global industry trusts to transform its information into the labels, barcodes, RFID tags, smartcards, documents, packing slips and pallet labels that drive business — from entrepreneurially minded small companies to the largest global enterprises.

BarTender 2021 helps organizations better manage their labeling lifecycle, increase label quality, integrate with existing business systems and improve reliability. It features advanced label document management, including design and graphically based approval workflows; fast, secure, web-based printing; high-availability license redundancy options; and enhancements to automation, integration and database capabilities.

New features that will elevate your labeling, your systems — and your business



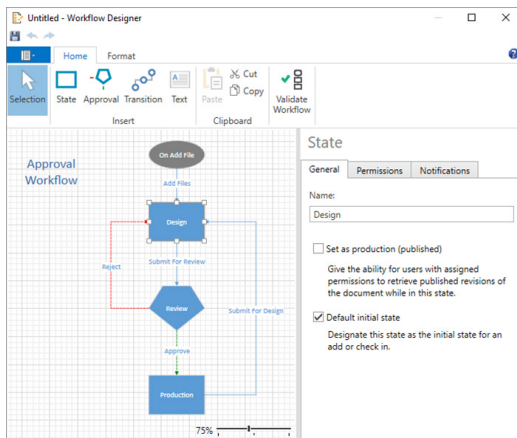
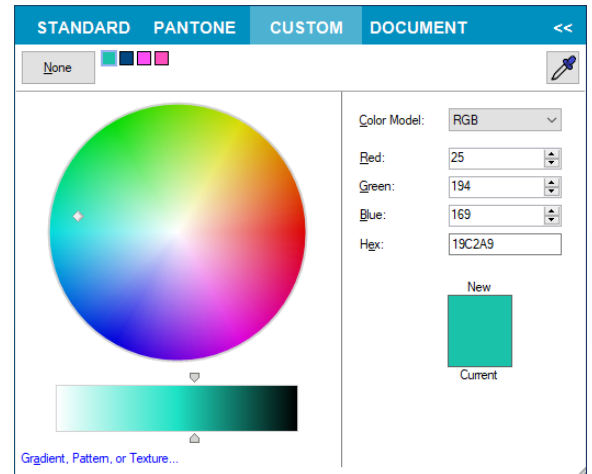
BarTender 2021 feature enhancements improve the entire labeling lifecycle. With BarTender 2021, customers can:

- Create and print more commercial-quality designs
- Accelerate label design and production with increased label QA
- Securely review and approve workflow from any web browser on any device anywhere, anytime
- Integrate more tightly and with more flexibility to existing and new business systems
- Improve productivity for new and existing markets globally
- Print from any browser on any device to more printers anywhere, anytime
- Minimize downtime and enable business continuity with advanced, always on high availability options

Label design

Create and print more commercial-quality designs

- Phrase Library for building multi-lingual text database with Auto-Translate and TMX export/import
- New color picker with PANTONE Color System support
- GS1 Version 20 support
- Expanded Data Matrix (DMRE) symbology support



Label workflow and production

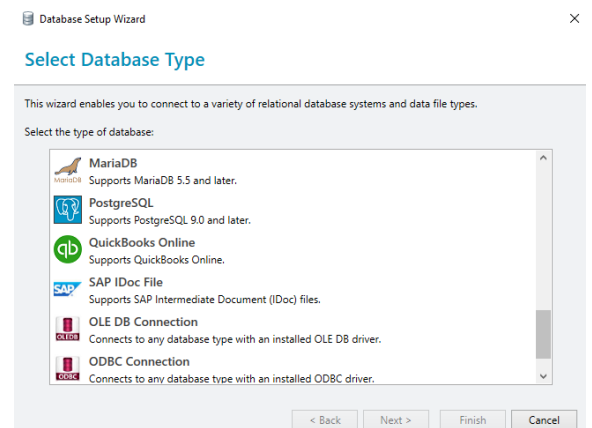
Accelerate label design and production with increased label QA

- New visual drag and drop Workflow Designer – easily create label workflows
- Tighter Print Portal and Librarian integration with:
 - Secure workflow review and approval from any web browser
 - Configurable workflow email notifications
 - File status tracking from start to finish with Revision history and workflow states for end-to-end project tracking
 - Secure document access with user-based permissions
- Improved Print Portal and Librarian performance and usability

System Integration

Integrate more tightly and with more flexibility to existing and new business systems

- New support for Excel Online, Google Sheets, JSON and QuickBooks Online
- Expanded API support for new Librarian workflows and Print Portal automation



Item	Type	Origin	Image
Field: Item	Field: Type	Field: Origin	

Item	Type	Origin	Image
Oranges (Jaffa)	Perishable	WA	
Oranges (Blood)	Perishable	CA	
Apples (Fuji)	Perishable	WA	
Apples (Gala)	Perishable	WA	

System Automation

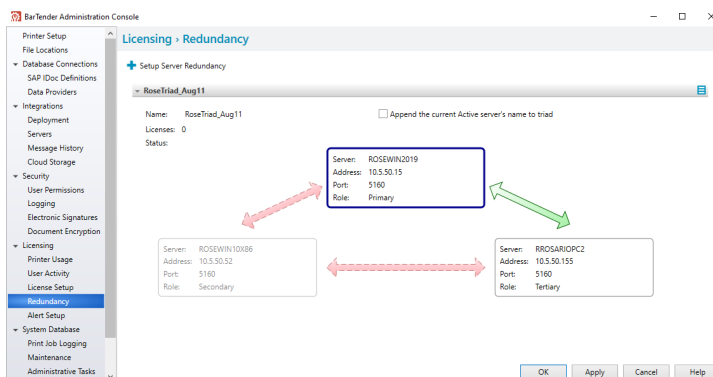
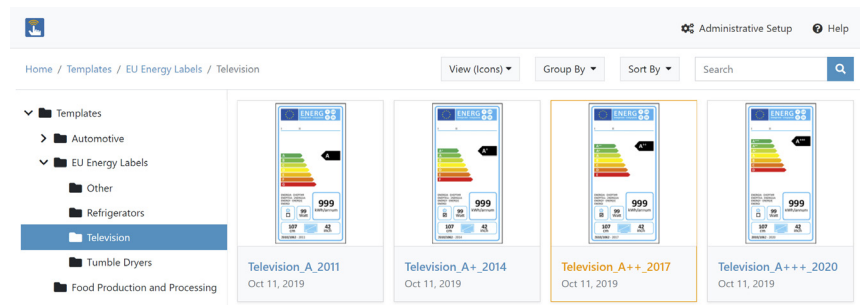
Improve productivity for new and existing markets globally

- Data-sourced color
- Image support in dynamic embedded tables
- Database file name data source option
- Data entry form improvements
- Improved While Loop action

Printing

Print from any browser on any device to more printers anywhere, anytime

- New improved Print Portal for web printing and support for:
 - Online approvals enabled for full and immediate printing control
 - Driverless printing with no printer drives required on server
 - Direct support for Print to PDF
 - Custom corporate branding
 - Intelligent batch streaming for large print jobs
 - Comprehensive security with SSL, role-based access and SSO with AD FS
- Digital Die cutting support for Primera printers
- Add comments when reprinting documents







Security and reliability/Management

Minimize downtime and enable business continuity with advanced, always on high availability options

- Enhanced failover license support
- Resilient licensing configuration for fault tolerance
- Automated restart of monitored databases
- User permissions template to easily add new groups or users
- Improved encryption key management
- New integration logging options

Key enhancements by edition

BarTender 2021's enhancements are available in the following BarTender editions:

 <h3>STARTER EDITION</h3> <ul style="list-style-type: none"> • New color picker • Digital die cutting support 	 <h3>PROFESSIONAL EDITION</h3> <ul style="list-style-type: none"> • Includes all Starter Edition features • Data-sourced color • PANTONE Color System • Database support for Excel Online, Google Sheets, JSON and QuickBooks Online • Improved Data Entry Forms including search and filter improvements • Support for dynamic embedded table images • Support for GS1 Application Identifiers (AI) Version 20.0 	 <h3>AUTOMATION EDITION</h3> <ul style="list-style-type: none"> • Includes all Professional Edition features • Support for automating changes to the data source of table objects • Support for automation of table object databases • Automated restart of monitored databases • Expanded BarTender /d command line parameter support • Improved integration message logging 	 <h3>ENTERPRISE EDITION</h3> <ul style="list-style-type: none"> • Includes all Automation Edition features • Improved web-based Print Portal • Librarian Workflow Designer • Integrated Print Portal with workflows • Licensing redundancy • Multi-lingual Phrase Library with Auto-Translation and TMX import/export • Print Portal custom branding • .NET SDK (Librarian and Print Portal APIs) • Librarian performance improvements • Improved encryption key management
--	---	--	--

System requirements

Operating system

- Windows 10
- Windows Server 2019 and 2016
- Includes all 32-bit and 64-bit (x64) editions
- An active internet connection may be required if Windows updates are required

Hard disk space and memory (*minimum)

Complete BarTender suite utilization (32-bit)

- Memory: 4 GB RAM
- Hard drive: 20 GB (to allow sufficient space for logs)

Complete BarTender suite utilization (64-bit)

- Memory: 8 GB RAM
- Hard drive: 20 GB (to allow sufficient space for logs)

Display resolution

- 1024 x 768 (minimum)
- 1920 x 1080 or better (recommended)

.NET FRAMEWORK

- .NET Framework 4.7.2 or later version is required
- The BarTender installer will automatically install all required .NET Framework components
- An active internet connection may be required to update .NET framework

Database

- BarTender System Database, Librarian, History Explorer and Reprint Console require Microsoft SQL Server 2005 or higher (Express or Full edition)
- Microsoft SQL Server 2014 SP3 Express is included with the BarTender suite

*(Recommended system specifications will vary based on the specific details of each installation)

Download BarTender 2021 and check out the What's New in BarTender 2021 guide for a complete list of features at www.SeagullScientific.com

Americas:
Sales@SeagullScientific.com
+1 425 641 1408

EMEA:
EMEA_Sales@SeagullScientific.com
+34 91 198 4600

APAC:
AsiaSales@SeagullScientific.com
+886 70 1018 4700

Japan:
JapanSales@SeagullScientific.com
+81 3 4589 5400

SAP® Certified
Integration with SAP Applications

ORACLE Gold Partner

Gold Microsoft Partner

aim

GS1 Silver Solution Partner

Windows 10 Compatible